



FUTURE STUDENTS, FUTURE TEACHERS: SKILLS FOR A CHANGING WORLD

Dr John Collick: Head of International Education Strategy



The long-term impact of C-19 on education

There will be a permanent shift in

Access

Wellbeing and Mental Health

Pedagogy

Assessment

Monitoring and Governance

(and not all for the bad)



Online education: The ideal





The reality

Global Connectivity

Broadband = 14%,
Internet = 44%,

Mobile = 101%



Broadcast

Teacher-centred
Inflexible format
Didactic
Infrastructure
Everyone



Online

Project-based
Flexible format
Privileged



Implications of Distance Learning

Student centered
Project based
Self management

Socialisation
Workload
Fatigue



EDUCATION IS A SOCIAL ACTIVITY

Citizenship

Emotional Intelligence

Co-operation

Ethics

Health and well-being



Familiarity and Authenticity



Students prefer this ↑

to this →





ONLINE COMMUNITY


Distance learning must maintain the social aspect of learning as much as possible



Organic Support Networks for

1. Wellbeing
2. Community and socialization
3. Training and support for technology
4. Resource sharing





朝礼

Traditionally, in Japan, Chorei is practiced as a short morning meeting for the whole organization. The manager greets the employees, they recite the company motto, and managers of each department go over the planned work for the day. It is also a great time for discussing any issues and getting a clear picture of the overall work.

Daily messaging Chorei.

What you are doing today

Positive news

Any questions?

Any issues?

Any hints or tips?

No Judgement



Sharing experiences, stories and feelings

But without any pressure to do so...





Cyberstudents

The Anarchy of Technology

The Myspace logo features a white icon of three stylized human figures of varying heights, with the tallest figure in the foreground and two smaller ones behind it. This icon is positioned to the left of the word "myspace" in a white, lowercase, sans-serif font.

myspace

The Bebo logo consists of a red circle containing a white, stylized lowercase letter 'b'. To the right of this circle is the word "ebo" in a black, lowercase, sans-serif font.

bebo

The Facebook logo features the word "facebook" in a white, lowercase, sans-serif font, centered within a solid blue rectangular background.

facebook

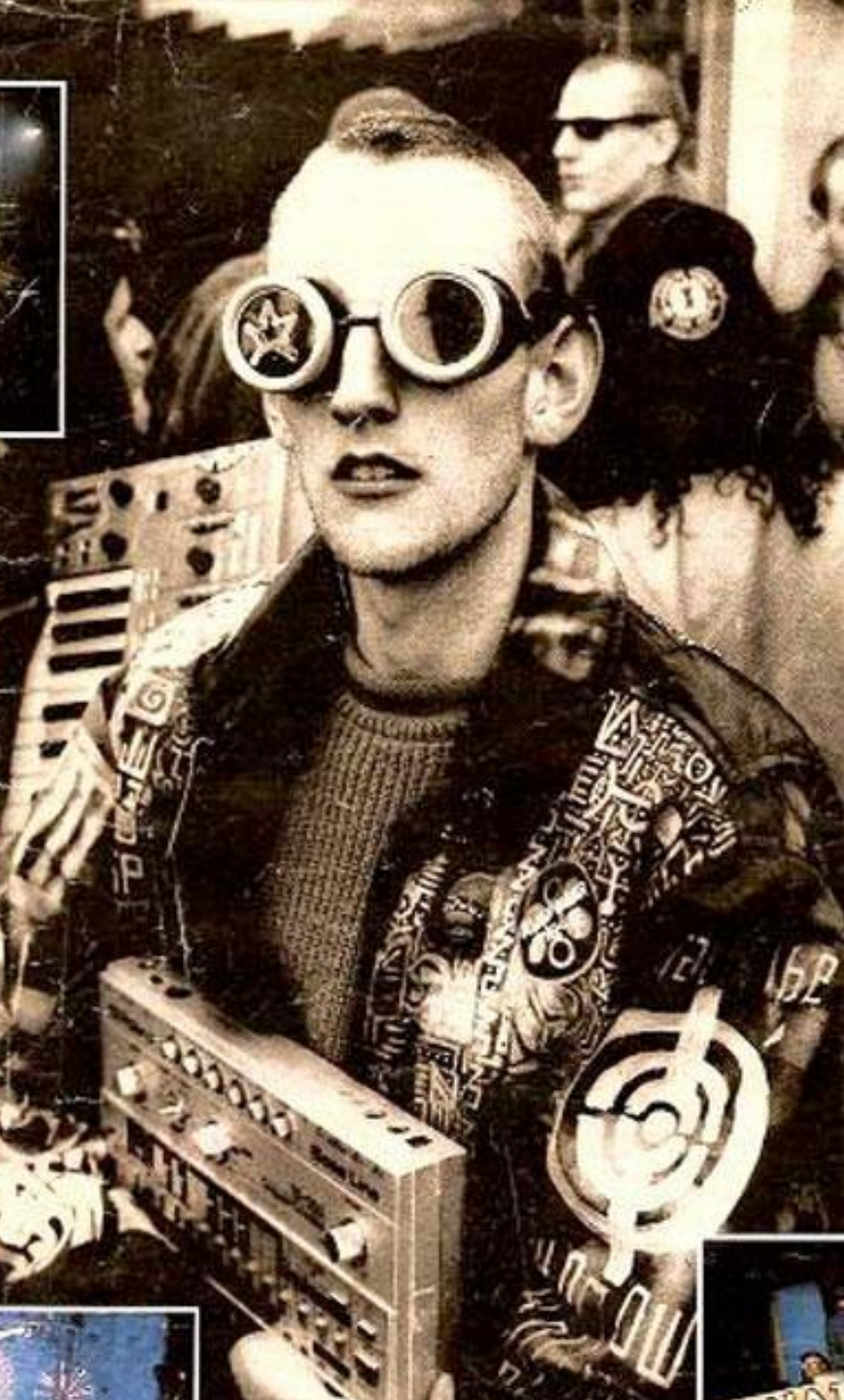




Claude Levi-Strauss

Knowledge and
identity are created
through a process of
Bricolage





Personalised Playlist of Apps



Mobile: The Exoself

“Systems linked to the self in a cooperative way, extending the mind and the body.”

The Exoself is unique and deeply personal.

[Greg Egan, *Permutation City*]



A woman with dark curly hair is shown in profile, wearing large headphones and looking at a laptop screen. The background is dark and blurred, suggesting a workspace. To the right of the woman, several glowing blue circular icons are floating, connected by faint lines. These icons include a lightbulb, a speech bubble, a heart, a star, a person silhouette, a location pin, a musical note, a camera, a globe, a thumbs up, and a share symbol. In the top left corner, there is a small orange horizontal bar.

Self-aware and self-directed learners:
Critical thinking
Emotional Intelligence

The Diamond Age Primer

An AI enhanced mobile device

“In your Primer you have a resource that will make you highly educated, but it will never make you intelligent. That comes from life.” *Neal Stephenson*



Preparing Cyberstudents

Exoself model

Diamond Age Primers

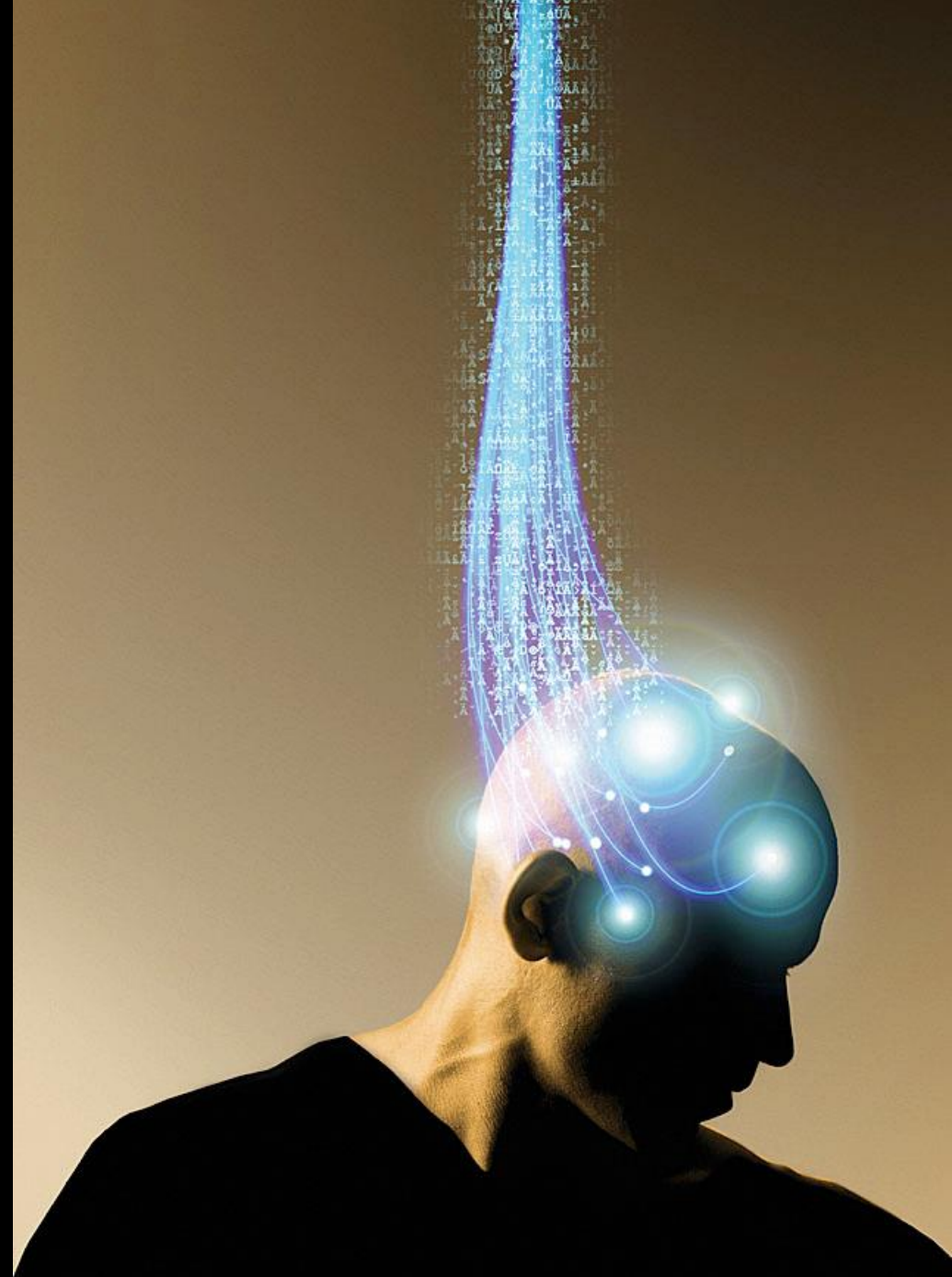
Curated Libraries

Analytical Skills

Cybersecurity

Cede Control

Metacognition



Exoself – the cloud of apps, information and accounts that surrounds us and enhances our abilities

Bricolage – Combining different elements to create meaning

Diamond Age Primers – personal learning devices with embedded AI



THANK YOU

Dr John Collick: Head of International Education Strategy

john.collick@prometheanworld.com

